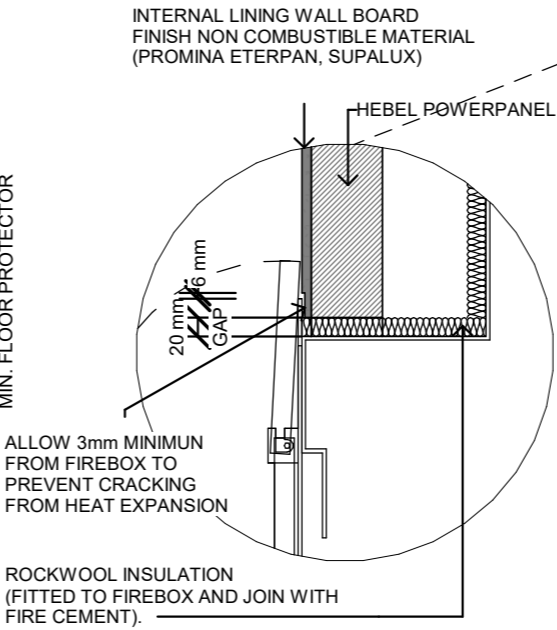
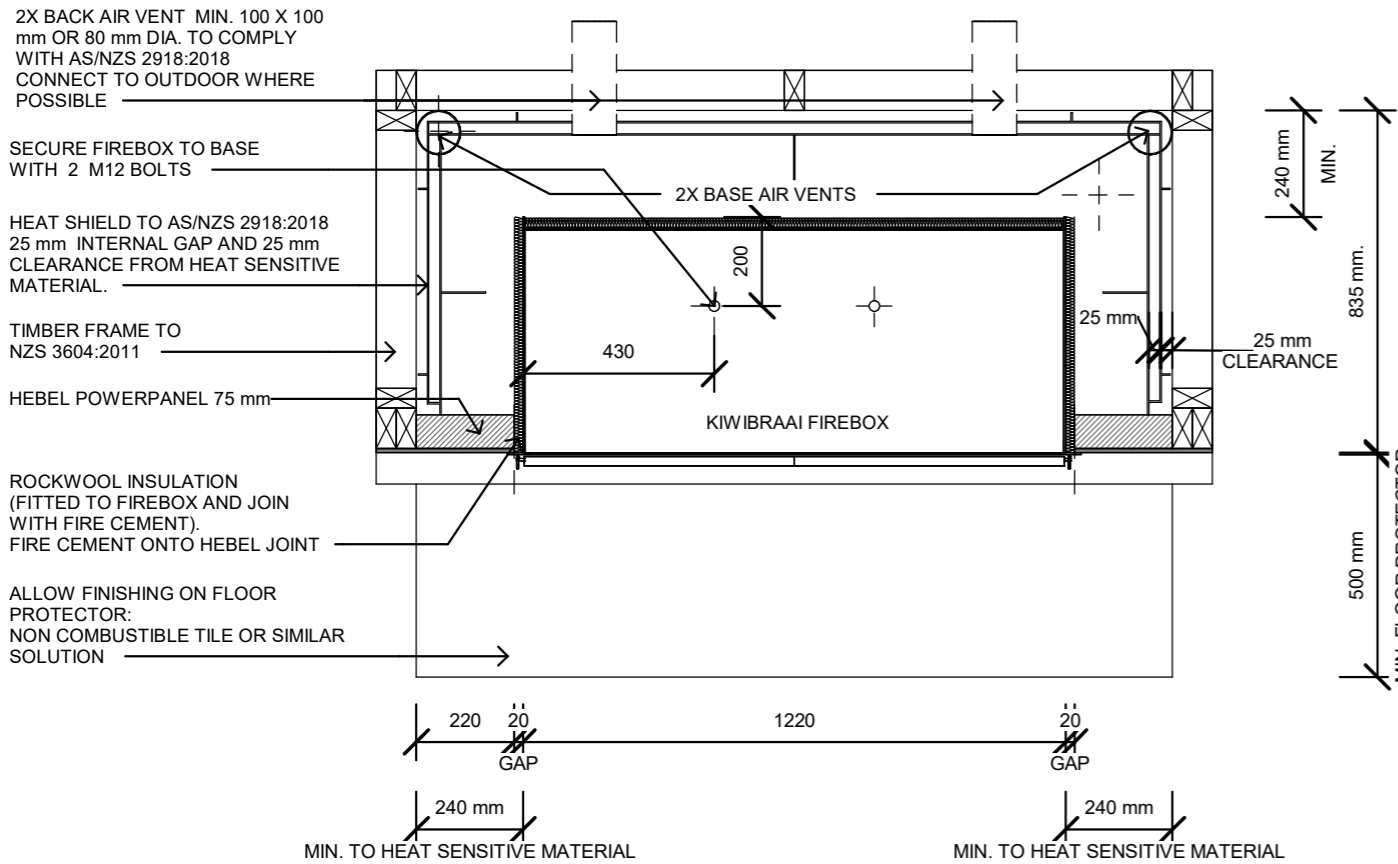


TIMBER FRAMING + HEAT SHIELD INSTALLATION

IMPORTANT NOTE:
 FOR ENCLOSED OPERATION OR TO GO THROUGH THE ROOF CAVITY STANDARD KIWIBRAAI FLUE SYSTEM MUST BE REPLACED BY TRIPLE LINED FLUE SYSTEM AS PER AS/NZ:2918:2018
 *INSTALL FLUE SYSTEM TO MANUFACTURERS SPECIFICATIONS



2X BACK AIR VENT MIN. 100 X 100 mm OR 80 mm DIA. TO COMPLY WITH AS/NZS 2918:2018 CONNECT TO OUTDOOR WHERE POSSIBLE

FOR ENCLOSED OPERATION STANDARD KIWIBRAAI FLUE SYSTEM MUST BE REPLACED BY TRIPLE LINED FLUE SYSTEM.

INTERNAL LINING WALL BOARD FINISH NON COMBUSTIBLE MATERIAL (PROMINA ETERPAN, SUPALUX)

ALLOW ENOUGH SPACE (AT LEAST 20 mm) BEHIND THIS FLANGE TO MAINTAIN THE ABILITY OF THE TOP DOOR TO STAY OPEN

HEBEL POWERPANEL 75 mm

ROCKWOOL INSULATION (FITTED TO FIREBOX AND JOIN WITH FIRE CEMENT).

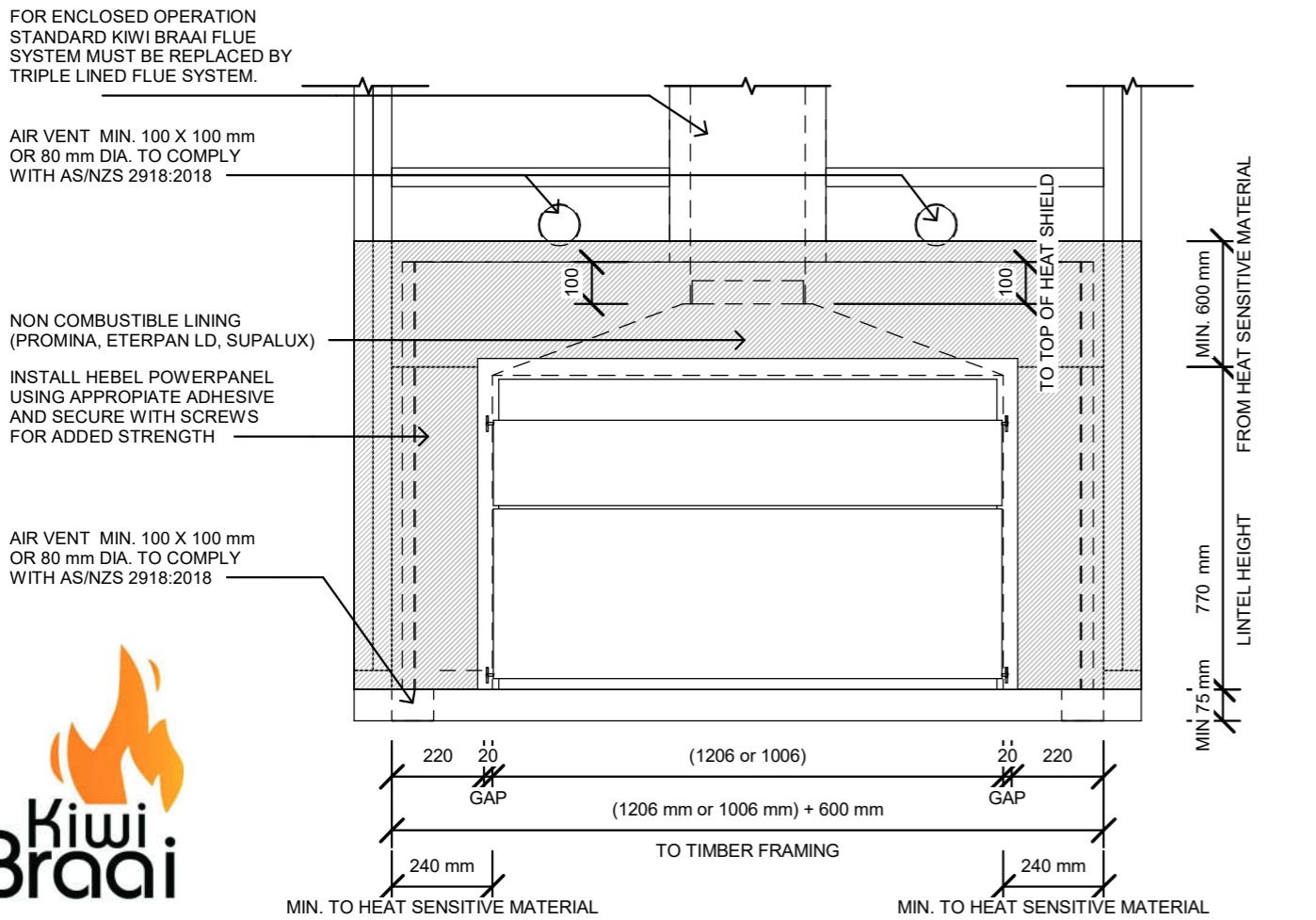
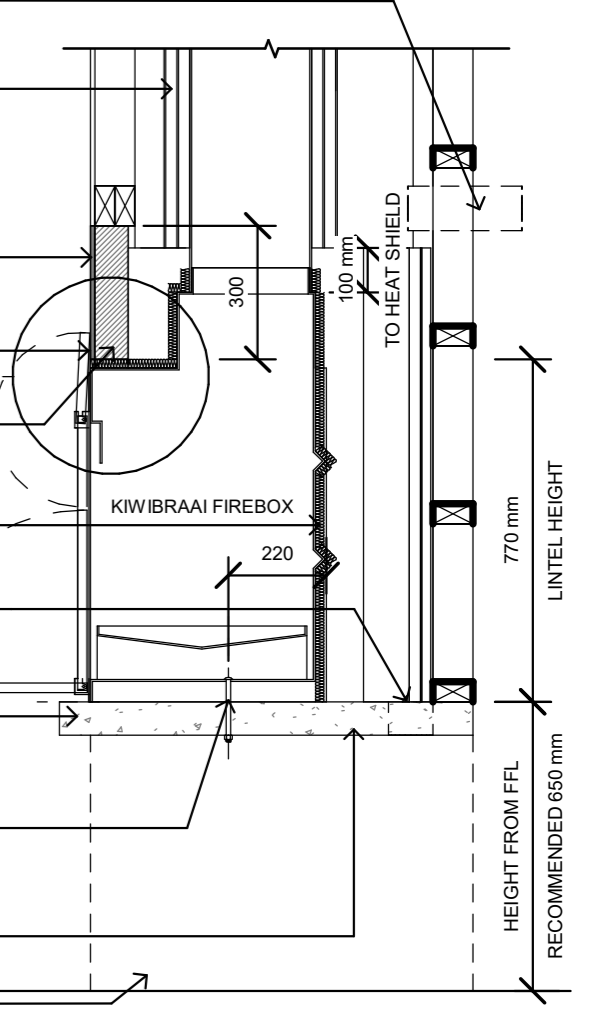
APPLY FIRE CEMENT SEALANT AS HEAT BARRIER AT JUNCTION AND FIXINGS

HEARTH SLAB LIGHTWEIGHT CONCRETE MIN 75 mm ALTERNATIVE OPTION: HEBEL BLOCK

SECURE FIREBOX TO BASE WITH 2 M12 BOLTS

2X BASE AIR VENT MIN. 100 X 100 mm OR 80 mm DIA. TO COMPLY WITH AS/NZS 2918:2018

SUPPORT STRUCTURE TO COMPLY WITH B1 BY OTHERS



AIR VENT MIN. 100 X 100 mm OR 80 mm DIA. TO COMPLY WITH AS/NZS 2918:2018 (CONNECT TO OUTDOOR WHERE POSSIBLE)

ROCKWOOL INSULATION (FITTED TO FIREBOX AND JOIN WITH FIRE CEMENT).

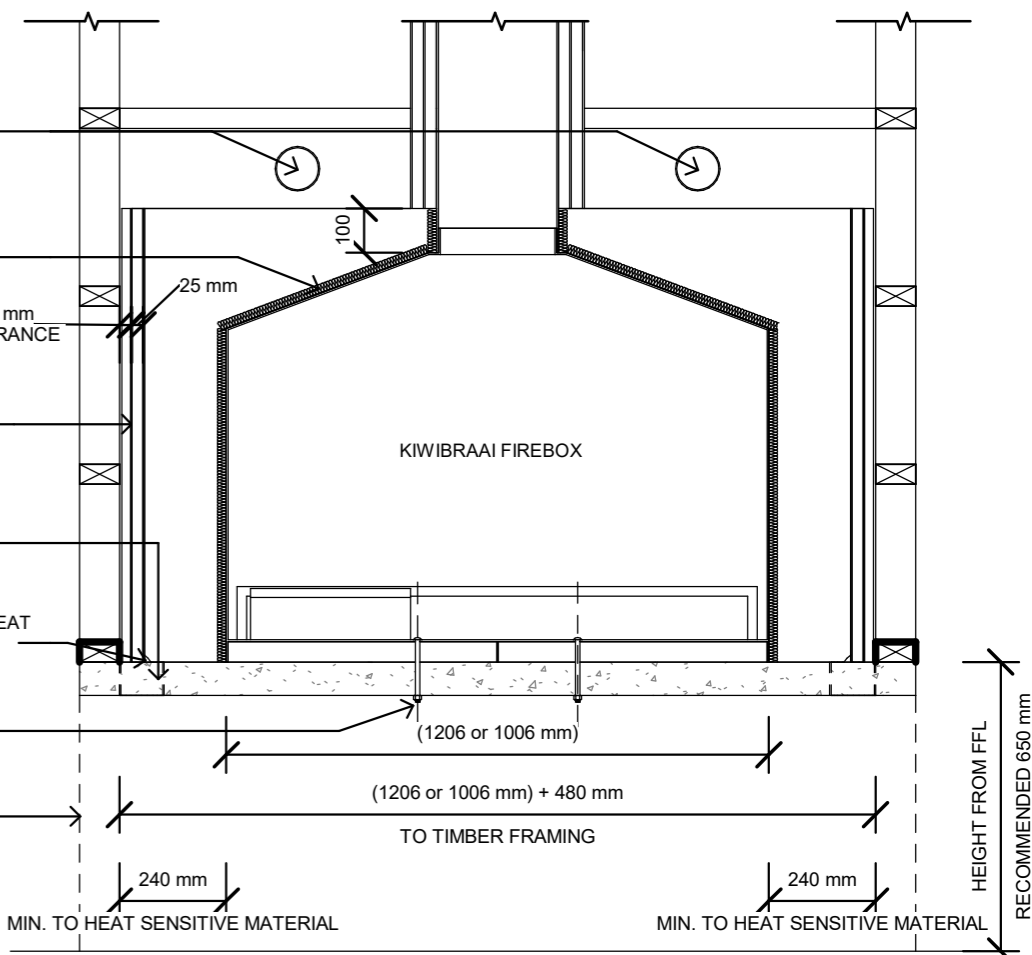
HEAT SHIELD BY OTHERS 25 mm INTERNAL GAP AND 25 mm FROM HEAT SENSITIVE MATERIAL.

AIR VENT MIN. 100 X 100 mm OR 80 mm DIA. TO COMPLY WITH AS/NZS 2918:2001

APPLY FIRE CEMENT SEALANT AS HEAT BARRIER AT JUNCTION AND FIXINGS

SECURE FIREBOX TO BASE WITH 2 M12 BOLTS

SUPPORT STRUCTURE TO COMPLY WITH B1 BY OTHERS



*Kiwibraai RESERVES THE RIGHT TO CHANGE PRODUCT SPECIFICATIONS WITHOUT PRIOR NOTICE